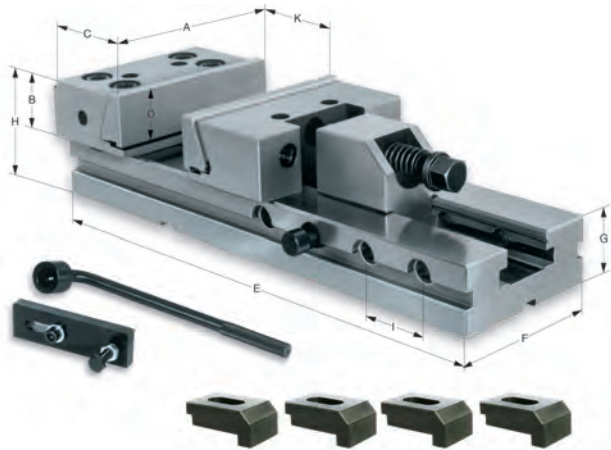


# MSR - with draw-down jaws



### APPLICATION

For universal use on milling machines and machining centers.

### TYPE

Clamping system mechanical without power transmitter, manually operated.

### CUSTOMER BENEFITS

- ⊕ Optimal price/performance ratio
- ⊕ Fast clamping range adjustment via bolt system

### TECHNICAL FEATURES

- Scope of delivery, complete with clamping wrench, workpiece stop and four clamping claws
- With draw-down jaws
- Hardened steel body (60 HRC)
- Clamping repeatability 0.02 mm

A11  
MSR, with draw-down jaws

Item no.	Jaw width A mm	B mm	C mm	D mm	E mm	E max mm	F mm	G mm	H mm	I mm	K mm	Clamping force kN	Weight kg
161828	125	40	78	32	345	401	95	40	80	50	150	30	12,7
161827	150	50	90	40	420	487	125	50	100	50	200	50	25,6
161826	150	50	90	40	520	587	125	50	100	50	300	50	29,5
161825	175	60	97	43	655	701	145	58	118	50	400	60	51,2

A37  
Clamping jaw, for movable jaw



Item no.	Contents of delivery	Size	Width mm	Height mm
006589	piece	125	125	38
006616	piece	150	150	48
006684	piece	175	171	58

A37  
Clamping jaw, for fixed jaw



Item no.	Contents of delivery	Size	Width mm	Height mm
006590	piece	125	120	38
006617	piece	150	146	48
006687	piece	175	171	58

A37  
Step jaw SB, for stationary jaw with jaw steps 5x5 mm



Item no.	Contents of delivery	Size	Width mm	Height mm
1043226 ▲	piece	125	120	38
1043228	piece	150	146	48
1043230 ▲	piece	175	171	58

A37  
Step jaw SB, for movable jaw with jaw steps 5x5 mm



Item no.	Contents of delivery	Size	Width mm	Height mm
1043227	piece	125	120	38
1043229	piece	150	146	48
1043231 ▲	piece	175	171	58

# Accessories MSR

A37

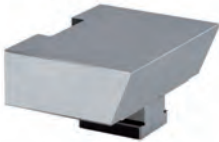
**V-jaw PB with jaw steps**, for movable jaw



Item no.	Contents of delivery	Size	Width mm	Height mm
1043409	piece	125	120	38
1043410	piece	150	146	48
1043411 ▲	piece	175	171	58

A37

**Inclinde jaw WB**, for circular parts for movable jaw



Item no.	Contents of delivery	Size	Width mm	Height mm
1043412 ▲	piece	125	120	38
1043413 ▲	piece	150	146	48
1043414 ▲	piece	175	171	58

A37

**Single clamp SPE**



Item no.	Contents of delivery	Size	T-slot	Thread
163329	piece	125	12	M10x45
163330	piece	125	14	M12x50
163331	piece	125	16	M12x50
163332	piece	125	18	M16x50
163333 ▲	piece	150/175	12	M10x50
163334 ▲	piece	150/175	14	M12x55
163335	piece	150/175	16	M12x55
163336	piece	150/175	18	M16x60

A37

**Rotation plate DP**



Item no.	Size	External Ø mm	Height
476867 ▲	125	226	23
476868 ▲	150	290	28
476870 ▲	175	320	28